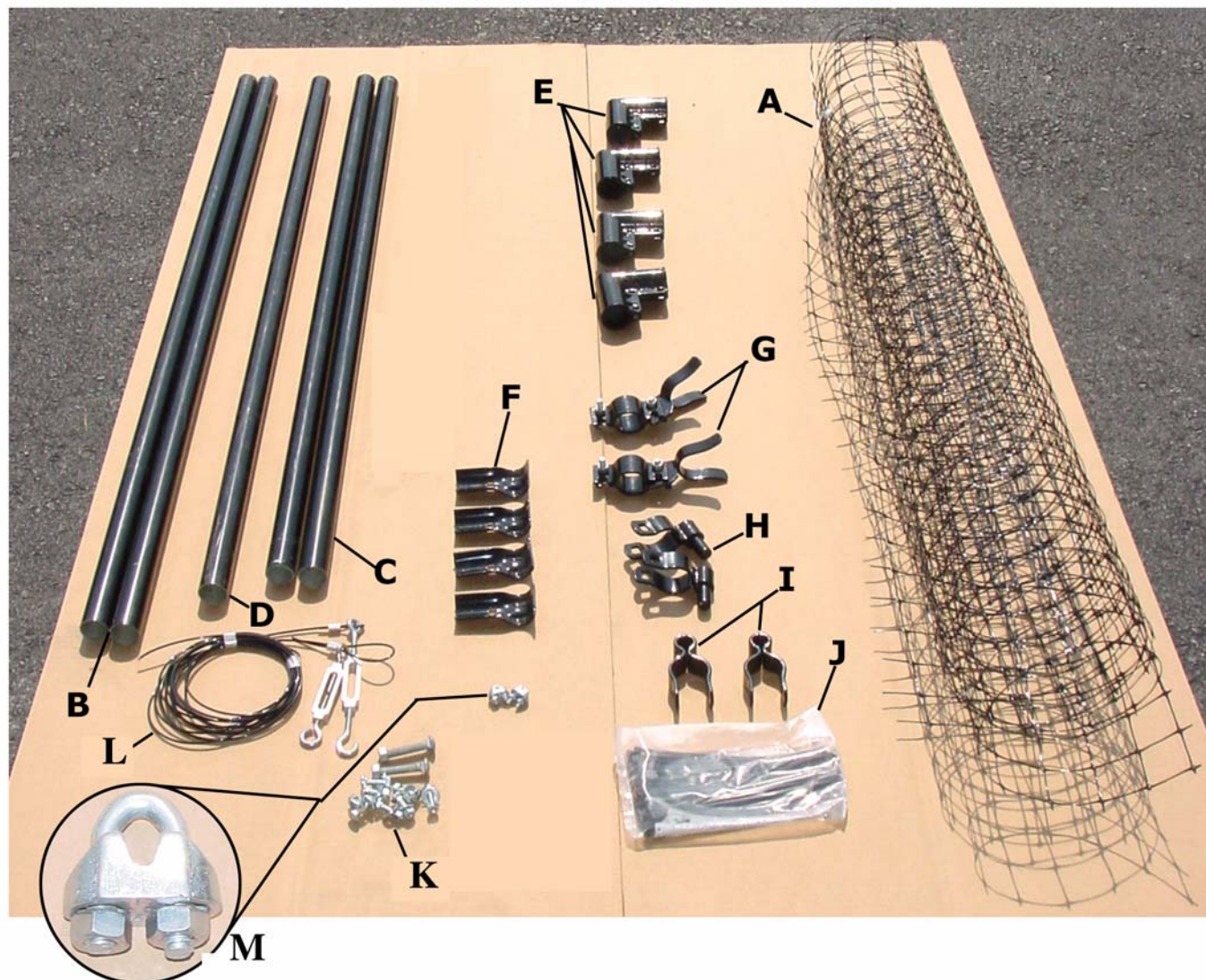


## Deer Fence Access Gate Parts List



- A) Section of Deer Fence You Provide
- B) Vertical Sides -2
- C) Horizontal Top/Bottom – 2
- D) Center Support Piece – 1
- E) Corner Braces – 4
- F) Center Support Clamps – 2
- G) Gate Latches – 2
- H) Male Hinges – 2
- I) Female Hinges -2
- J) Self Locking Ties – 50
- K) 3/8 in x 2 in Carriage Bolts -2 & Self Tapping Screws – 16
- L) Corner Tension Wire – 2
- M) Wire Clamps – 2

## Deer Fence Access Gate Assembly Instructions

Caution Edges Of Tubing May Be Very Sharp

**Step 1:**  
Lay out your unassembled gate.  
As shown in figure 1.

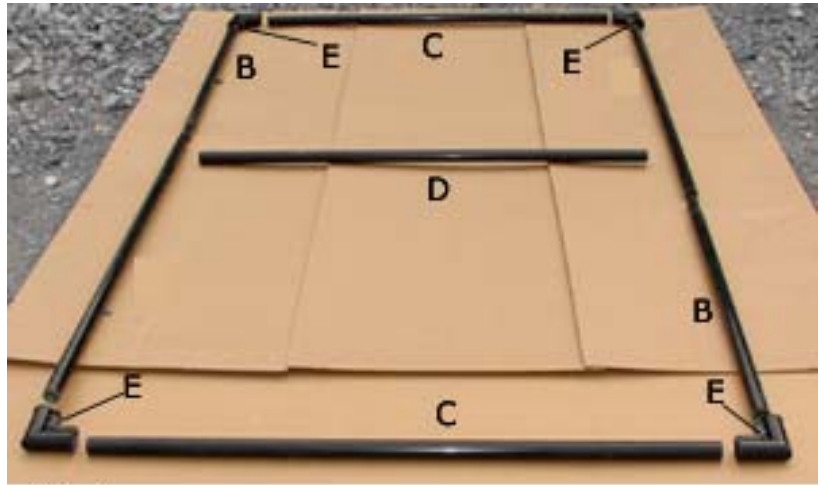


Fig. 1

**Step 2:**  
Make connections between pieces  
B, C, & E as shown in figure 2.



Fig. 2

**Step 3:**  
Measure to find the center of the  
vertical sides of your gate.  
Connect center support piece,  
part D using connectors, part F,  
by drilling 3/8" holes through  
part D. Secure with 3/8"  
carriage bolts, part L. Shown in  
figure 3.

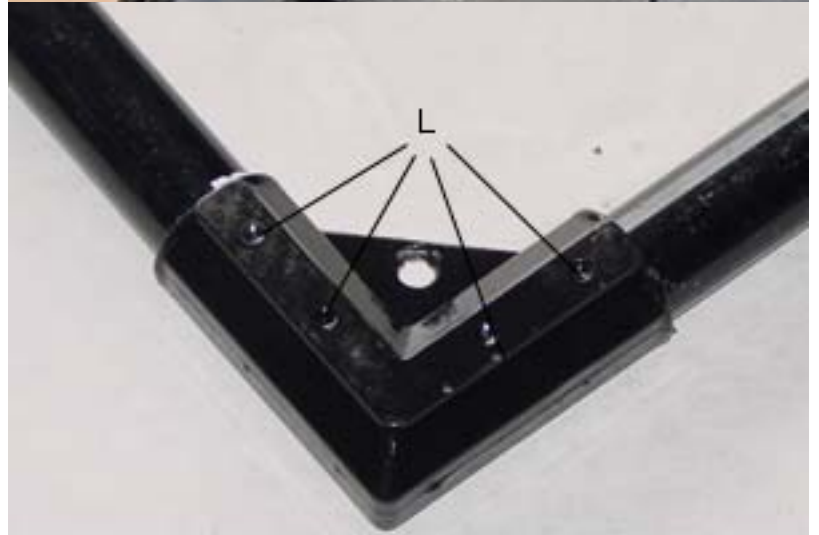


Fig. 4

**Step 4:**

Secure each corner brace, part E, with 4 self tapping screws as shown in figure 4.

**Step 5:**

Place the turnbuckles on part L in the center holes of the corner braces, part E, at the top of your gate. Then run the corner tension wire to the opposite corner at the bottom. Take slack out of the wire and tighten securely with wire clamp, part M. Evenly tighten turnbuckles keeping gate square. (Measure diagonally to ensure gate is square) Your gate should resemble figure 5.



Fig. 5



Fig. 6

**Step 6:**

Fasten, part A which you provide depending on fence type and gate size, to your gate frame using self locking ties, part J, every 6-8 in. Trim ties.

**Step 7:**

**Attach one female hinge, part I approximately 18" from top of your gate using bolts supplied. Attach one female hinge, part I, on the same side, approximately 18" from bottom of your gate using bolts supplied.**



Fig. 7

**Step 8:**

**On opposite side attach one latch, part G, approximately 18" from the top and one latch, part G approximately 18" from the bottom using bolts supplied, be sure pad lock hole is at the bottom of the hinge. Your gate is now ready to hang.**



Fig. 8